

[Jump to Website](#)

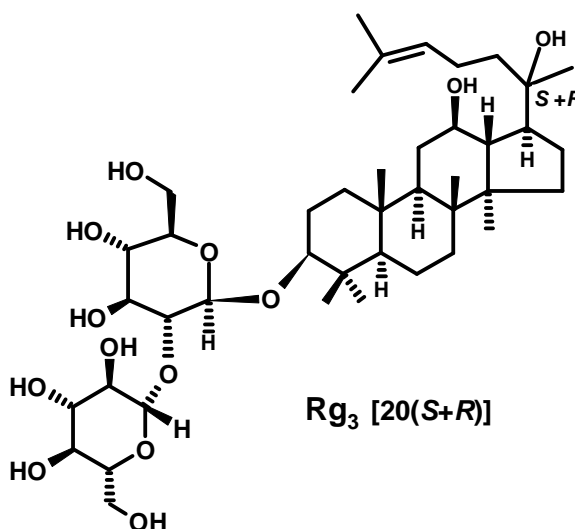
[Request Quote](#)

Product Specifications

Ginsenoside Rg₃ [20(S+R)]

CAS 14197-60-5 (20S enantiomer);
38243-03-7 (20R enantiomer)

Structure:



Mol. Formula
Plant Origin
Source

$C_{42}H_{72}O_{13}$
Panax ginseng C.A. Mey., Araliaceae
Leaves

Mol. Wt.

785.01

<i>Test</i>	<i>Specification</i>
Assay (hplc)	Rg ₃ : > 95%, 20R/S ~ 3:1 Rg ₃ : > 95%, 20R/S ~ 1:1
Appearance	Off-yellow powder
LOD	< 3%
Heavy metals	< 10 ppm

Storage: Maintain in cool, dry containment.

Wilshire Technologies

TEL: +1- 609-683-1117